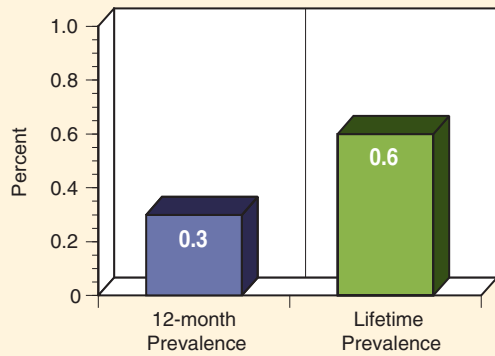


Bulimia Nervosa

Prevalence

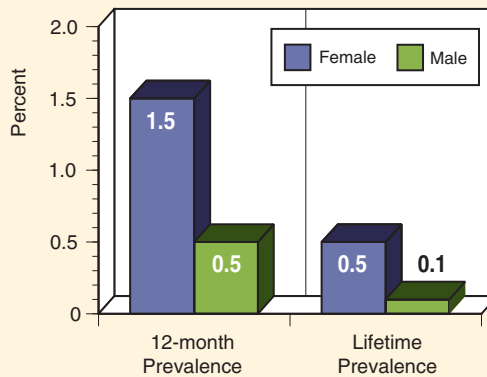
- **12-month Prevalence:** 0.3% of U.S. adult population
- **Severe:** Not Reported
- **Lifetime Prevalence:** 0.6% of U.S. adult population



Average Age-of-Onset: 20 years old

Demographics (for lifetime prevalence)

Sex:



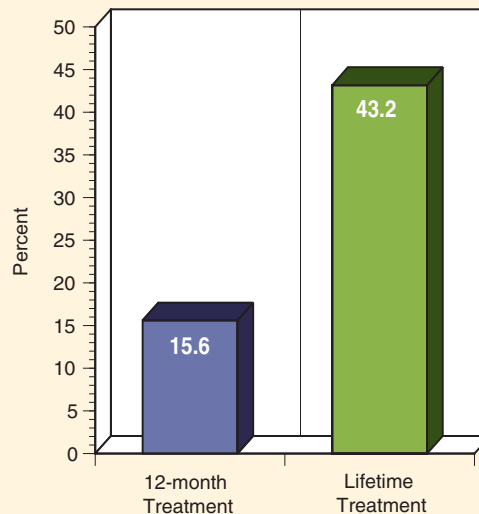
Race: Not Reported

Age:

- People ages 18–29, 30–44, and 45–59 were all significantly more likely than 60+ year olds to suffer from bulimia nervosa

Treatment/Services Use

- **12-month Treatment for Bulimia Nervosa:** 15.6% of those with disorder are receiving treatment
- **Lifetime Treatment for Bulimia Nervosa:** 43.2% of those with disorder are receiving treatment



Hudson JI, Hiripi E, Pope HG, Kessler RC. The prevalence and correlates of eating disorders in the National Comorbidity Survey Replication. *Biological Psychiatry*. 2007; 61:348-58.